



48' EXPANDO

503-464-0900

M-1

Specs as of 1/1/10

### Production Features

Spacious 3 Tier Production Area with seating for eleven  
66 - Video monitors at Front Production Desk  
2 - 8" Video monitors at the Second Production Desk  
2 - 8" Video monitors at the Third Production/Chyron Desk

### Video

Grass Valley 3000-3ME Digital Switcher  
48 input, 3 ME, 14 Aux Busses  
Accom Dual Twin DVEous  
Abekas A-42 Stillstore  
Codi Telestrator

### Camera

Wired for 14 Cameras  
5 - Sony BVP 500 Digital Studio Cameras  
3 - Sony BVP 550 Digital Cameras  
1 - Sony BVP 70 Handheld Cameras  
2 - Fujinon 70 X Lenses with Servo Zooms  
2 - Fujinon 55 X Lenses with Servo Zooms  
1 - Fujinon 44 X Lens  
3 - Fujinon 20 X Lenses  
1 - Fujinon 18 X Lenses  
1 - Studio Build Up Kits by request  
2 - LPS/Clock Cameras  
8 - Vinton Heads (5-Vector 70, 3-Vision 22)

### VTR

Wired for 10 VTR's  
1 - 4 Channel EVS LSM XT  
1 - 2 Channel Omega Fast Forward DDR with Lance  
1 - Sony DVW A500 Digibeta  
5 - Sony BVW 75 Beta SP  
6 - Ash Vail Slo-Mo Controllers  
1 - VHS/DVD Combo Recorder  
43 - Video monitors in VTR/EVS Area

### Routing

BTS Venus 48 X 32  
22 - Single buss 48 button controllers with breakaway  
3 - X/Y controllers with expansion panel

### Graphics

Chyron SDI Duet LEX with clip player

### Terminal

9 - DPS Frame Syncs  
104 - Grass Valley Video DA's  
Grass Valley Sync Generators  
2 - Leitch Video Proc Amps  
1 - For-A Color Corrector

### Audio

Yamaha PM-4000 56 input audio Mixer with 48 mono  
4 Stereo Inputs, 8 VCA, 8 Groups, 8 Aux, 8 Matrix  
60 - Audio D/A's  
2 - 360 Systems Digidart II  
1 - Roland Digital Audio Replay  
1 - CD Player  
8 - DBX 160X series compressors/limiter  
2 - DBX 166 series stereo compressors/limiter  
1 - Draher series stereo compressors/limiter  
1 - Lexicon PCM-70 Effects/Delay  
4 - Sennheiser HMD-25 Commentator Headsets  
2 - Big Ear Parabs (by request)  
5 - Sennheiser ME 66 Shotguns  
4 - Sennheiser ME 67 Shotguns  
4 - EV RE-50B Hand Mic  
2 - EV RE-16 Hand Mic  
2 - EV 635A Hand Mic  
4 - Sony ECM 55 Lav mic  
2 - FishPoles with Shure FP-22 (by request)  
10 - Video monitors in Audio

### Communications

RTS with 12 Powered PL Channels  
8 - 802 intercom stations  
13 - 2 Channel intercom stations  
2 - SAP Source Assign Panel  
12 - IFB Channels  
12 - Camera Iso System  
4 - SPK-300 Speaker Boxes  
12 - BP 325 Intercom Beltpacks  
10 - IFB Beltpacks  
4 - Clearcom AB-100 Announce Boxes  
30 - Beyer Headsets (15 Single, 15 Double)  
15 - RTS/Telex lightweight Headsets  
2 - Telos Links  
2 - Gentner SP-3A Hybrids  
4 - Gentner Couplers  
4 - Motorola 16 Channel UHF Radios  
2 - Motorola 16 Channel UHF Base Stations  
8 Line telephone system

### External Monitors

2 - 13" Color  
8 - 9" (5-Color, 3-B/W)  
2 - 10" Color

### Power

197-270V, 200 amps single or 3 phase  
150' Camlock

### Overall Dimensions

48' Medical Coaches Expando Trailer  
70' overall Trailer Length with Tractor  
Expandable section 33' x 48"  
13' 3" height, 12' 6" wide, 80,000 lbs (36,400 kgs)

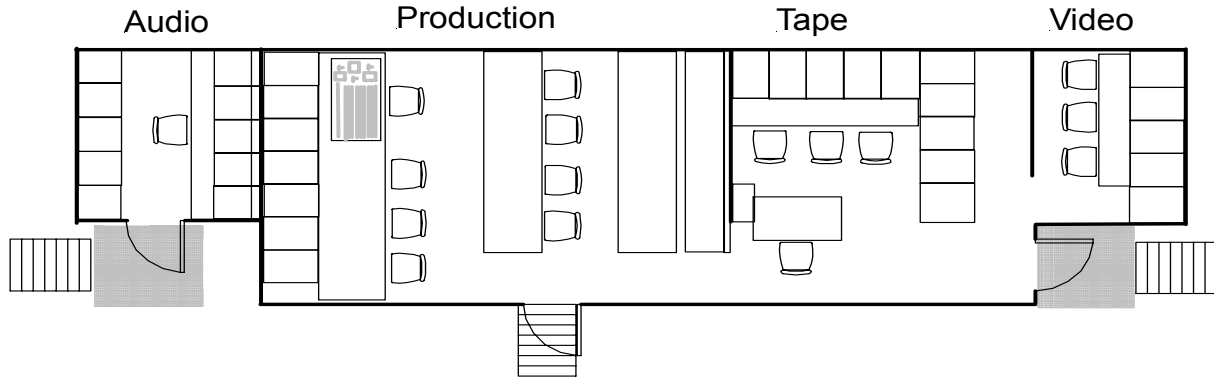


48' EXPANDO

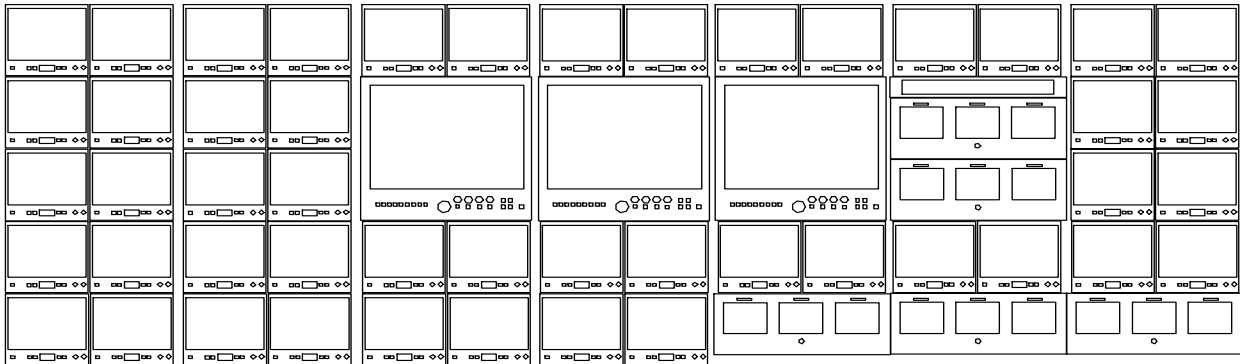
503-464-0900

# M-1

## Layout



## Monitor Wall



**Director of Business Development**

**Frank Coll**

cell 310-629-0160

fax 310-534-3047

[fcoll@miramobile.com](mailto:fcoll@miramobile.com)

[www.miramobile.com](http://www.miramobile.com)

**Director of Sales**

**Steve Meyer**

office 503-464-0811

cell 971-563-6387

fax 503-464-0897

[smeyer@miramobile.com](mailto:smeyer@miramobile.com)

[www.miramobile.com](http://www.miramobile.com)